

KARACHI GUIDE MAP SHEET No. 2

Roads, metalled: (with milestone) according to importance

unmetalled: do

Cart-track, Pack-track & Foot-path. River bed (dry)

Walls: lined, unlined. Pipe line. Mast

Embankment. Wire fencing. Broken ground

Railways: double line (with milestone); single line (station) sidings

Light railway & tramway. Telegraph line. Police station

General post office. Post office. Post & Telegraph office

Important buildings. Other buildings. Temporary huts

Scale 3 Inches to a Mile, or 1:21,120.
Contour intervals 20 feet
Surveyed 1948-49.

True North in this sheet is 3' 0" East of Mean Grid North.
Magnetic North about 1/2° East of Mean Grid North in 1946.
(Annual Change negligible)

Church, Mosque, Temple, Tomb, Lighthouse

Groves, Trees, Palm, other; Cactus; Plantain, Vegetable garden

Scrub and undergrowth. Cultivation limit. Chimney

Boundary, cantonment and racecourse with pillars & numbers

municipal

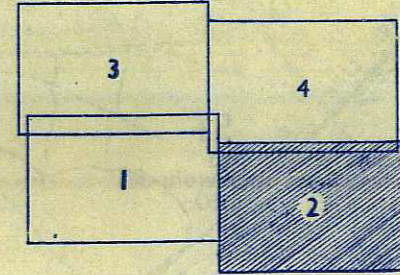
new industrial area

Height, triangulated: station; points. Play ground

approximate; relative; bench-mark

Contours with cliff, sand; hill; low mounds; flat

Index to Sheets.



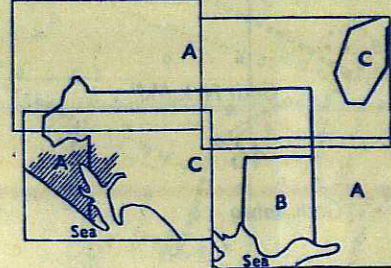
GRID II A (Yards)

Grid references are given in hundreds of yards East and North of the south-west corners of the lettered squares: thus the grid reference of LANDH B.S. is H 50984
(for grid letters see body of map)

For more precise work, references may be given to the nearest 10 yards, viz. 2218432

Published under the direction of the Surveyor General of Pakistan, 1955.

Compilation Index.

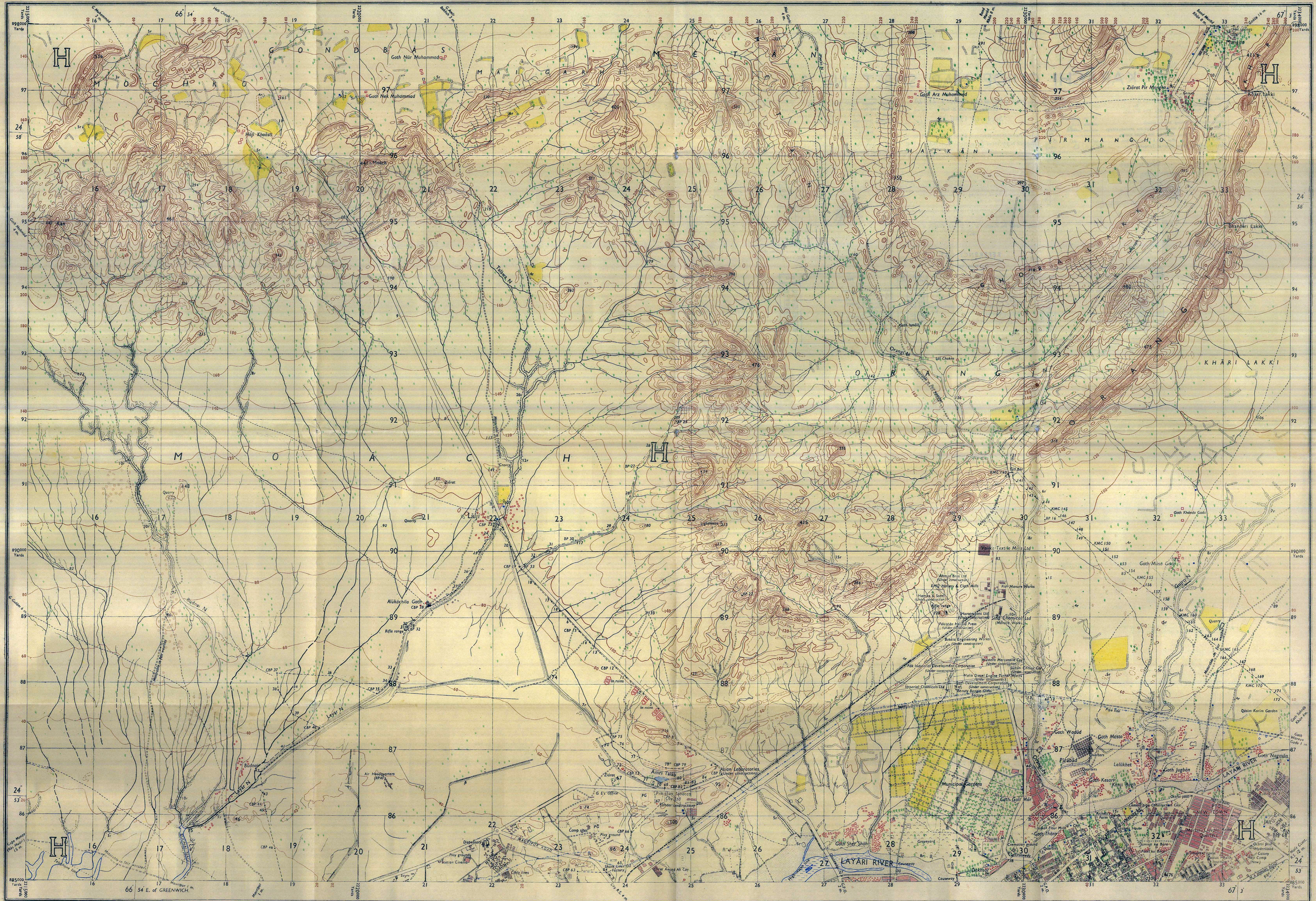


A Original survey, scale 3" = 1 mile, 1948. (Area shown by hachures verified on scale 3.6" = 1 mile, in 1949).
B Blue print Revision survey, scale 3" = 1 mile, 1948.
C Colour print Revision survey, scale 3" = 1 mile, 1948.

REFERENCE LIST

Alphabetical Index

| Ref No. | Name | Grid Reference | Ref No. | Name | Grid Reference | Ref No. | Name | Grid Reference |
|---------|------------------|----------------|---------|---------------|----------------|---------|------------------------|----------------|
| — | Astral Lodge | 409 837 | — | Korangi Creek | 479 726 | — | Willington Castle Farm | 440 005 |
| — | Bahawalpur House | 491 825 | — | Mairi River | 445 834 | | | |
| — | Ghizri Road | 363 745 | — | Mature Works | 514 799 | | | |



KARACHI GUIDE MAP SHEET No. 3

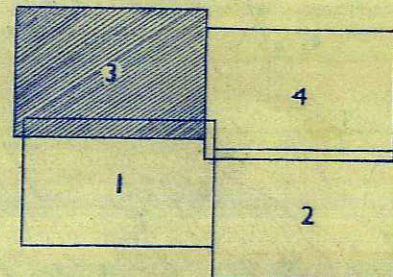
| | | | | |
|--|----|----|----|----|
| Roads, metalled (with milestone) according to importance | 1 | 2 | 3 | 4 |
| unmetalled do. | 5 | 6 | 7 | 8 |
| Canal track, Pack-track & Foot-path, River bed (dry) | 9 | 10 | 11 | 12 |
| Walls, lined, unlined, Pipe line, Mast | 13 | 14 | 15 | 16 |
| Embankment, Wire fencing, Broken ground | 17 | 18 | 19 | 20 |
| Railways double line (with milestone), single line, station, sidings | 21 | 22 | 23 | 24 |
| Light railway & tramway, Telegraph line, Police station | 25 | 26 | 27 | 28 |
| General post office, Post office, Post & Telegraph office | 29 | 30 | 31 | 32 |
| Important buildings, Other buildings, Temporary huts | 33 | 34 | 35 | 36 |

Scale 3 Inches to a Mile, or 1:21,120.
Contour intervals 20 feet
Surveyed 1948-49.

True North in this sheet is 3° 4' East of Mean Grid North.
Magnetic North about 1/2° East of Mean Grid North in 1946.
(Annual Change negligible)

| | | | | |
|---|----|----|----|----|
| Church, Mosque, Temple, Tomb, Lighthouse | 37 | 38 | 39 | 40 |
| Grass, Trees, Palm, other, Cactus, Plantain, Vegetable garden | 41 | 42 | 43 | 44 |
| Scrub and undergrowth, Cultivation limit, Chimney | 45 | 46 | 47 | 48 |
| Boundary, contourment and racecourse with pillars & numbers | 49 | 50 | 51 | 52 |
| do. municipal | 53 | 54 | 55 | 56 |
| do. new industrial area | 57 | 58 | 59 | 60 |
| Heights, triangulated: station, point, Play ground | 61 | 62 | 63 | 64 |
| approximate, relative, bench-mark | 65 | 66 | 67 | 68 |
| Contours with cliff, sand, hill, low mound, flat | 69 | 70 | 71 | 72 |

Index to Sheets



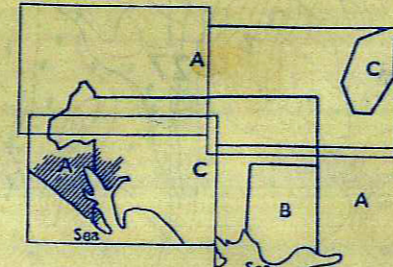
GRID 11 A (Yards)

Grid references are given in hundreds of yards East and North of the south-west corners of the intersect squares; thus the grid reference of YALKA TEXTILE MILLS LTD. is H 294000.
For grid letters see body of map.

For more precise work, references may be given to the nearest 10 yards, viz. 2941000.

Published under the direction of the Surveyor General of Pakistan, 1955.

Compilation Index



A. Original survey, scale 3-1 mile, 1948. (Area shown by hachures verified on scale 3.4:1 mile, in 1949).
B. Blue print revision survey, scale 3-1 mile, 1948.
C. Colour print revision survey, scale 3-1 mile, 1948.

REFERENCE LIST

Alphabetical Index

| Ref. No. | Name | Grid Reference | Ref. No. | Name | Grid Reference |
|----------|-------------------------------|----------------|----------|------------------------------|----------------|
| 289 881 | Batala Engineering Works | 289 881 | 219 905 | Pakistan Tobacco Company | 250 863 |
| 316 862 | Cement Pipe Construction Coy. | 316 862 | 312 867 | Rickets's Farm | 312 867 |
| 212 861 | Carlson Engineer | 212 861 | 313 858 | Sahi Development Corporation | 290 887 |
| 328 824 | Hyderabad Colony | 328 824 | 280 853 | Shark Liver Oil Factory | 238 851 |
| 222 862 | Ice Factory (M.E.S.) | 222 862 | 292 882 | Sind Chemical Ltd. | 292 882 |
| 289 879 | Imperial Chemicals Ltd. | 289 879 | | Station Cinema | 212 853 |
| 306 858 | Indian Flour Mills | 306 858 | 291 865 | Sultan Chitroy Company | 298 882 |
| 322 860 | Jahangir Sethna Road | 322 860 | 327 861 | Valika Textile Mills Ltd. | 298 906 |
| 322 860 | Jahangir Sethna Road Quarter | 322 860 | 290 883 | Western Mercantile Company | 294 884 |
| 339 858 | Jail | 339 858 | | Zodiac Health Institute | 332 853 |
| 328 850 | Jamshed Road | 328 850 | | | |